

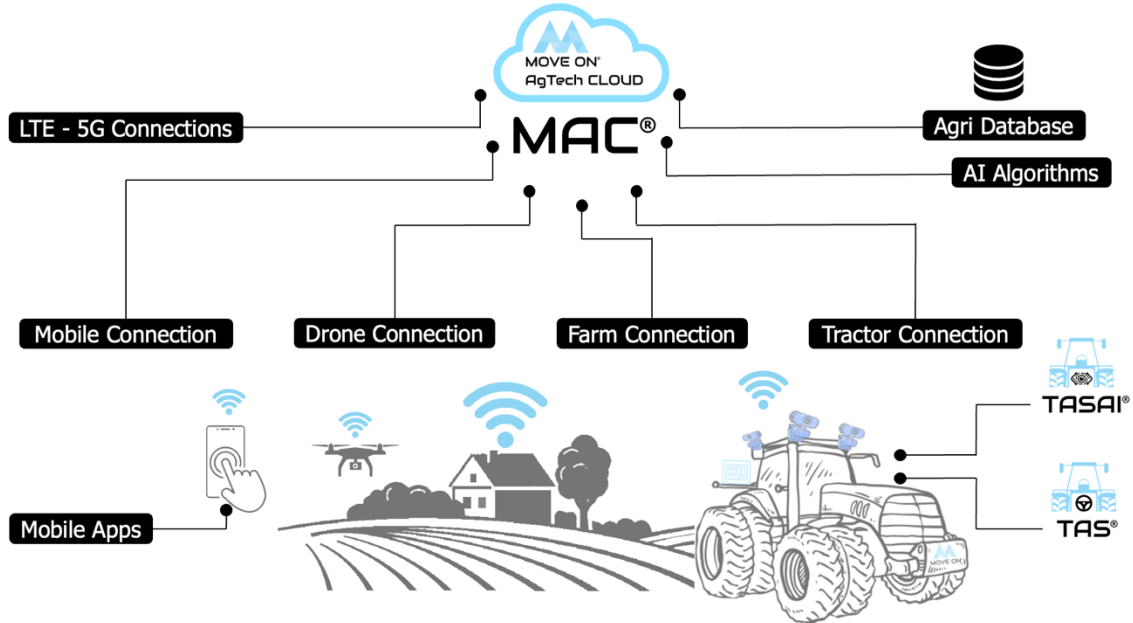


MOVE ON AgTech Cloud Platform

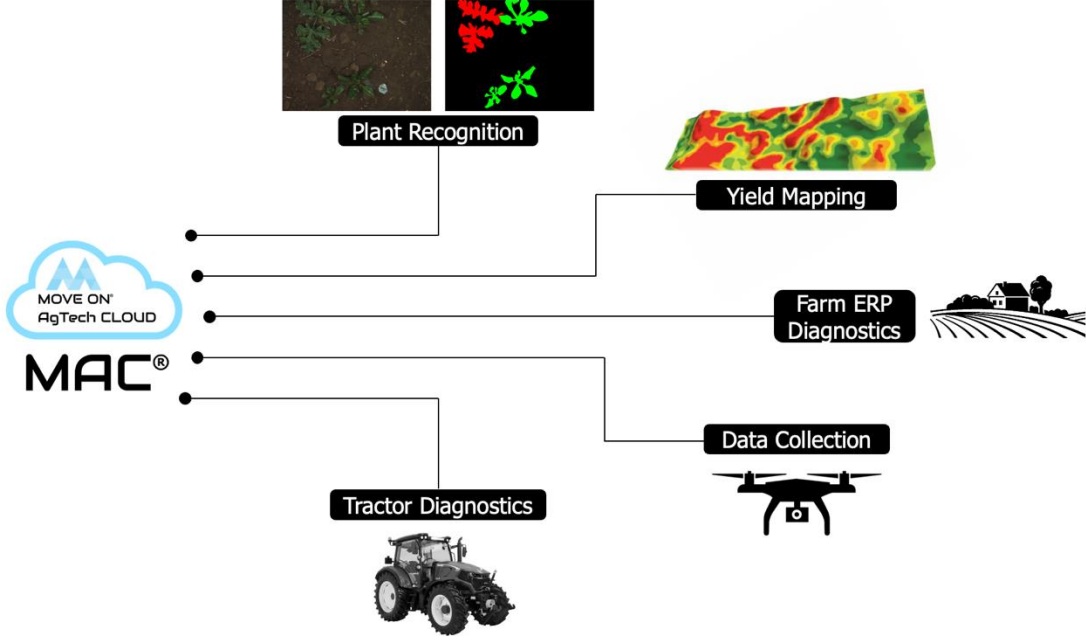
MAC – MOVE ON AgTech Cloud Platform is an online cloud platform that allows the analysis of agricultural data with artificial intelligence. MAC, TAS and TASAI kits through tractors; LTE works in connection with 5G and SaaS technologies and farm, drone and mobile applications.

MAC is a platform. Accessible from the web site on the [Go to Platform](#) button.

MAC can also be used through mobile apps.



Our company protects the IP Rights of our product with the Patent Registrations numbered 2021/003997, PCT-TR2021/051207 and the Trademark Registration numbered 2020/45956.



Agricultural Database

MAC – MOVE ON AgTech Cloud Platform works by storage of the image and numerical data collected with drone with the TAS, TASAI kits, mobile apps and satellite images in a database.



Tractor Connection with TAS and TASAI

The MAC platform is open to remote connection with tractors through TAS and TASAI kits. Therefore, MAC can store the tractor's work information, diagnostics and then present the tractor's work reporting over the platform. It also makes remote control of tractors with LTE - 5G connects.

Farm and ERP connection

Mac is a web platform, so it can be integrated with ERP systems available on farms and can manage farm and tractor budgets by exchange data with remote connection.



Drone Connection



MAC can collect data by connecting with mobile devices such as Drones. By making this data meaningful, MAC can produce many algorithms such as insulation area detection, disease and abnormality detection, mapping...etc

LTE - 5G Connection

MAC can establish a remote connection with TAS and TASAI Kits by LTE-5G technologies. In this way, remote access and manage to the data of the tractor, field and plants becomes possible.



Saas Cloud Based Agricultural Softwares

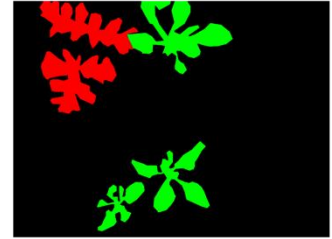
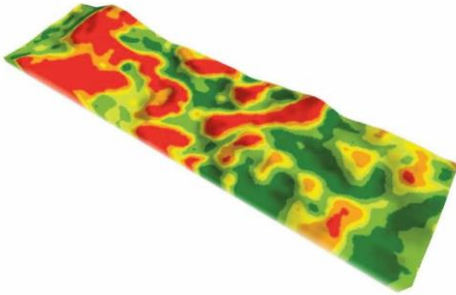
MAC is available with artificial intelligence -based cloud software in it. MAC can be integrated with many farm ERP software and mobile applications of many agricultural organizations and softwares.

Mobile Apps

MAC, the software it contains can be used as mobile applications. In this way, an anomaly in the field, a predictive maintenance in the tractor, disease and nutritional element in plants, such as remote drone management can be done through many management mobile applications.



Agricultural Artificial Intelligence Softwares



MAC platform works with the method of meaning of camera images through artificial intelligence softwares. MAC monitors and analyzes fields and plants through satellite images throughout the year. MAC drone images can produce results such as disease detection and insulation by making meaning with artificial intelligence software. Estimates unit field efficiency by making sense of MAC plants and tractor data. Therefore, fertilizer, irrigation and hoeing can make predictions. It can also create a yield map with artificial intelligence.

Capabilities of MAC Farming Cloud



Equipment Maintenance Tracking

It monitors the maintenance times of agricultural equipment and warns it to be done on time. This extends the life of the equipment.

Farm Tracking

You can instantly monitor the instant status of your farm with mobile devices from anywhere.

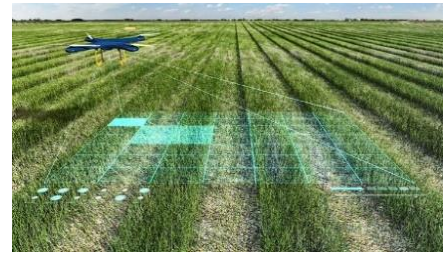


Plant Disease Tracking

It analyzes and analyzes the data in the plant and soil and detects the disease.

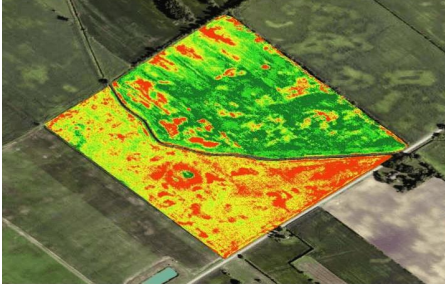
Product Count and Yield

Thanks to the equipment working in the field, it makes yield estimates by counting the products.



Mobile Application

With the mobile application, it can instantly access and intervene in productivity analysis.



Yield Mapping

It creates yield maps by making plant and soil analyzes thanks to the data it receives from the satellite.

Point Spraying

It detects distinguish plants green from green. In this way, it reduces the use of chemicals by spraying by sight.



Personnel Tracking

It intervenes instantly by calculating the efficiency of the personnel using the equipment and by remote control.